

**Appendix 2**

## SPORTS SYNDICATE GRANTS, 1999–2000

<b>CU Club</b>	<b>Recurrent assistance</b>	<b>Non-recurrent</b>	<b>BUSA travel</b>
Association Football	£850.00		
Association Football – Women's	£1,000.00		
Athletics	£2,750.00	£500.00	
Badminton	£3,000.00		£147.50
Basketball	£1,300.00		
Basketball – Women's	£650.00		£250.00
Boat Club – Women's	£1,000.00		
Bowmen	£400.00		
Canoe	£750.00	£300.00	
Cricket – Women's	£380.00		
Cruising	£1,600.00		
Crusaders Cricket	£600.00		
Cycling	£250.00	£450.00	
Eton Fives	£650.00		
Falcons Football	£350.00		
Fencing	£850.00		£780.20
Gliding	£300.00		
Golf	£1,300.00		
Gymnastics	£380.00		
Hare and Hounds	£900.00		
Hockey – Men's	£620.00		
Hockey – Women's	£1,000.00		
Ice Hockey	£900.00		
Ice Hockey – Women's	£750.00	£500.00	
Judo	£400.00	£200.00	
Karate	£950.00	£300.00	
Korfball	No grant requested		
Lacrosse	£600.00	£1,000.00	£565.80
Lacrosse – Women's	£950.00	£40.00	
Lawn Tennis Club	£2,750.00		
Lightweight Rowing	£700.00		
Modern Pentathlon	£1,000.00		
Netball	£850.00	£250.00	
Orienteering	£950.00	£120.00	
Rackets	£450.00		
Real Tennis		£350.00	
Revolver and Pistol	No grant requested		
Riding	£500.00		
Rifle Association	£1,000.00	£200.00	
Rugby Fives	£750.00		
Rugby Football – Women's	£850.00	£50.00	
Rugby League	£750.00		
Ski	£250.00		
Small Bore	£320.00		
Squash – Men's	£1,300.00		
Squash – Women's	Joint Application		
Swimming and Waterpolo	£6,200.00		
Table Tennis	£320.00		
Trampoline	£550.00	£1,000.00	
Volleyball	£1,900.00		£957.50
<b>TOTAL</b>	<b>£46,820.00</b>	<b>£5,260.00</b>	<b>£2,701.00</b>

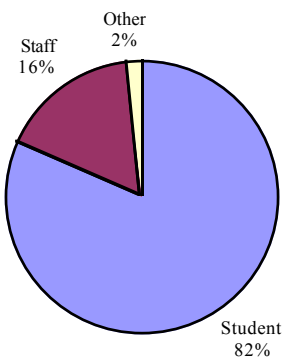
**Appendix 3**

FENNER'S FITNESS SUITE (1 OCTOBER 1999 – 30 SEPTEMBER 2000)

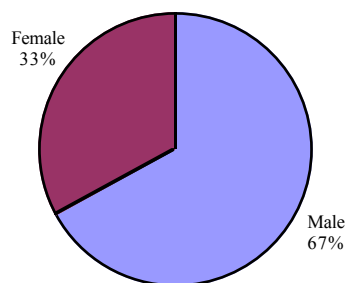
**Membership**

	<b>Members</b>	<b>Male</b>	<b>Female</b>
Student	1,773	68%	32%
Staff	353	59%	41%
Family	22	45%	55%
UCLÉS/CUP	9	67%	33%
Alumni (concessions)	9	78%	22%
Alumni	4	75%	25%
<b>TOTAL</b>	<b>2,170</b>	<b>67%</b>	<b>33%</b>

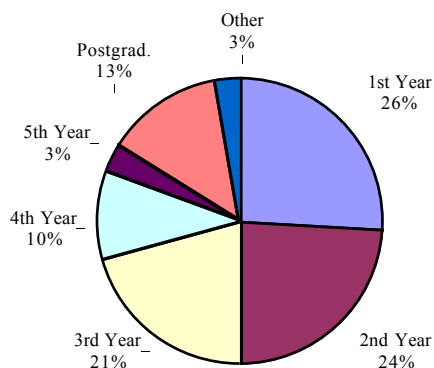
**Membership 1999–2000**



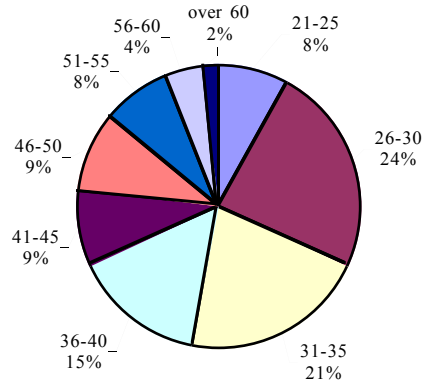
**Membership (Gender)**



**Year of Study**



**Staff Ages**



**College Membership – total 2,170**

<b>College</b>	<b>Members (%)</b>	<b>College</b>	<b>Members (%)</b>
Christ's College	4.60%	New Hall	0.51%
Churchill College	2.60%	Newnham College	1.19%
Clare College	5.03%	Pembroke College	0.76%
Clare Hall	0.72%	Peterhouse	1.66%
Corpus Christi College	3.02%	Queens' College	1.91%
Darwin College	3.41%	Robinson College	4.30%
Downing College	2.18%	St Catharine's College	3.62%
Emmanuel College	7.93%	St Edmund's College	1.66%
Fitzwilliam College	2.85%	St John's College	0.85%
Girton College	2.13%	Selwyn College	4.52%
Gonville and Caius College	8.01%	Sidney Sussex College	4.34%
Homerton College	4.86%	Trinity College	4.77%
Hughes Hall	4.30%	Trinity Hall	3.24%
Jesus College	5.33%	Westminster College	0.00%
King's College	2.98%	Wolfson College	1.06%
Lucy Cavendish College	0.12%	Other/no affiliation	3.84%
Magdalene College	1.70%		