

# NEWSLETTER

SPECIAL 800TH SECTION FOR THE STAFF OF THE UNIVERSITY OF CAMBRIDGE

FEBRUARY 2009

# 2009

## 800th Anniversary year arrives

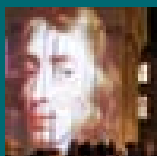
A SPECTACULAR LIGHT SHOW projected onto the Senate House and Old Schools attracted an estimated 15,000 people over a three-night run beginning 17 January. The University launched its celebrations of its 800th Anniversary this year by staging the show, which featured iconic images from Cambridge's history and stunning illustrations by Quentin Blake.

The light show's colourful displays presented a broad overview of the accomplishments and activities of Cambridge's students, alumni and academics. Larger-than-life projections celebrated William Harvey's discovery of the mechanism of blood circulation, Frank Whittle's jet propulsion research and John Milton's authorship of *Paradise Lost*. Solar powered cars raced across the façade of the Senate House and on to the Old Schools, students punted the Cam and crowded together in their academic robes, and illuminated manuscripts revealed the founding dates of Cambridge's earliest Colleges.

The show was produced by world-renowned light artist Ross Ashton, who specialises in work on large-scale projections across enormous surfaces.



PHOTOS BY  
NIGEL LUCKHURST



# Light Fantastic



The light show highlighted 800 years of Cambridge history

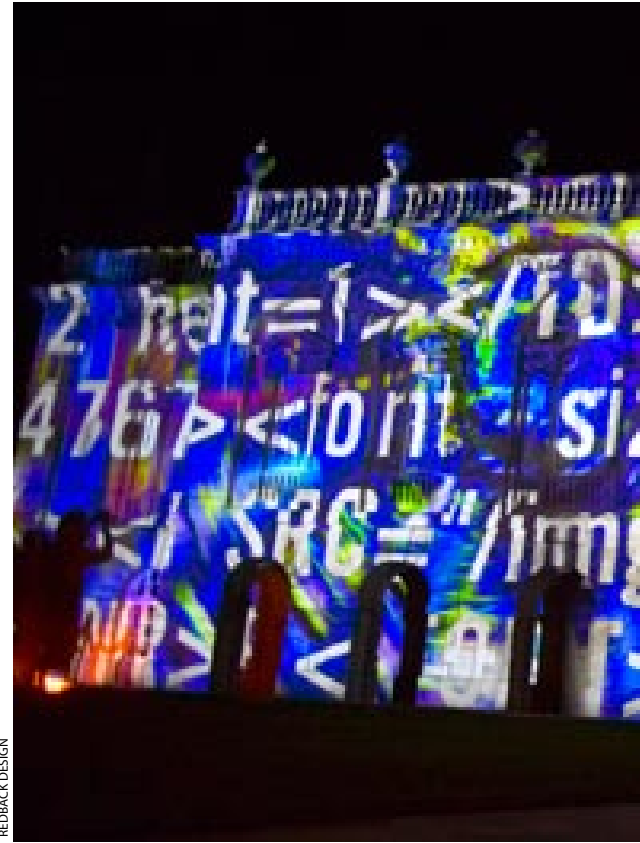


Cover, Cambridge's 800th Anniversary year and a painting of 19th-century students is projected onto the Senate House.



Above, BBC Look East presenter Susie Fowler-Watts and illustrator Quentin Blake ring hand bells on 17 January to announce the start of a newly-composed work that was rung in four city centre churches, and at churches throughout England, the US and Australia. Projections show an illuminated manuscript and illustrations representing discoveries by Watson and Crick of the double helix structure and William Harvey of blood circulation.

Right, Poet John Milton eyes the crowd assembled in Senate House yard.



REDBACK DESIGN



→ To see the light show online, visit [www.800.cam.ac.uk](http://www.800.cam.ac.uk)



Left, HTML code represents the many advances Cambridge has contributed to computer technology.

Below, the Large Hadron Collider.



# A touch of whimsy



ILLUSTRATOR QUENTIN BLAKE'S whimsical drawings of alumni Charles Darwin and Isaac Newton added a quirky element to the 800th Anniversary light show. Darwin was portrayed riding on the shell of a slow moving turtle, in a nod to his early research on the Galapagos Islands. He was also shown sitting astride a swiftly flying beetle, in pursuit of a butterfly on the fens of Cambridgeshire. Newton was depicted lounging under a tree as apples succumb to gravity and fall around him. To illustrate Newton's discovery that white light is composed of the full colour spectrum, Blake showed him peering at a prism as a rainbow of light issues forth. Blake, who read English at Downing College, is one of Britain's best-loved illustrators. He has illustrated more than 300 books, including those of Roald Dahl.

